



Agricultural Land

Rue A Ronces, Vale

£175,000

LOCAL MARKET

SOLE AGENT

This agricultural field extends to approximately 13 vergee and 28.59 perch – approximately 5.5 acres.

The field benefits from direct access from the adjoining lane and is bounded by hedging and earth banks. The field is currently tenanted but can be sold with vacant possession if desired.

Key facts

- Substantial agricultural field
- Measuring 13 vergee and 28.59 perch (approx. 5.5 acres)
- Direct access off the road
- Can be sold with vacant possession
- Bounded by earth banks and hedging

t 01481 236039
e enq@cooperbrouard.com
w cooperbrouard.com



 **cooper
brouard**

GUERNSEY'S ESTATE AGENT



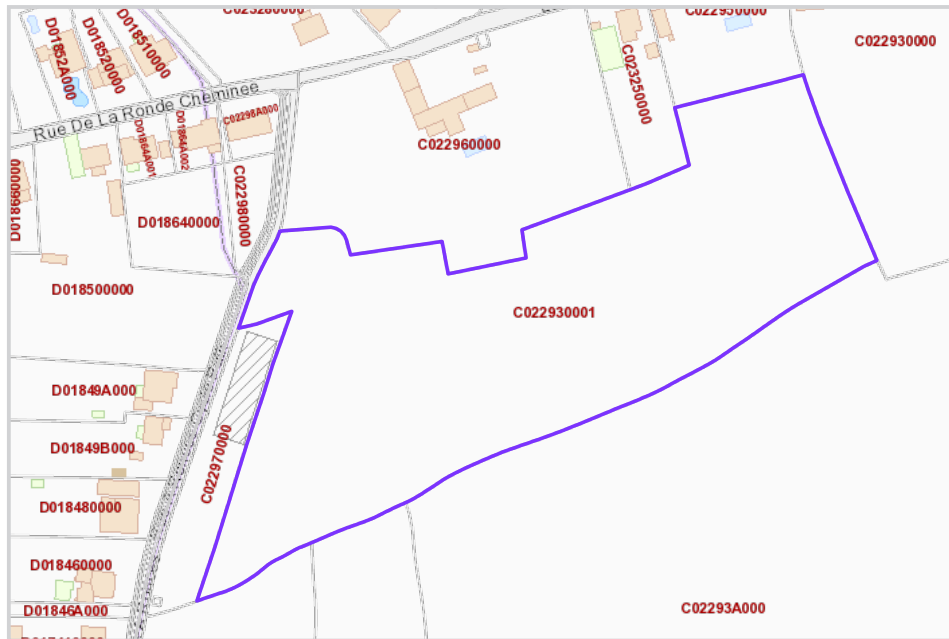




Perry's ref: 8 C3

what3words: shogun.marina.ritzzy

TRP: 450



Mapping / Aerial Photography Copyright © States of Guernsey 2026

CONTACT OUR LOCAL MARKET TEAM



Matt



Ben



Liz



Courtney



Hannah



La Grande Rue,
St Martin's,
Guernsey GY4 6RR

t 01481 236039
e enq@cooperbrouard.com
w cooperbrouard.com

