



7 Les Caches Court

£410,000

La Route des Cornus, St Martin, GY4 6PP

LOCAL MARKET

SOLE AGENT

This top floor apartment is conveniently situated in St Martins with the village amenities just a short walk away.

The property is smartly presented throughout with a newly fitted kitchen/ diner, bright and spacious lounge, two bedrooms and bathroom. There is a floored attic providing excellent storage, communal gardens, parking space and additional visitor parking.

School catchment: St Martins Primary and Beaucamp High School

Key facts



- Top floor apartment
- Two bedrooms
- Newly fitted kitchen/diner
- Communal gardens
- Parking for 1 and additional visitor spaces

t 01481 236039
e enq@cooperbrouard.com
w cooperbrouard.com



 **cooper
brouard**

GUERNSEY'S ESTATE AGENT

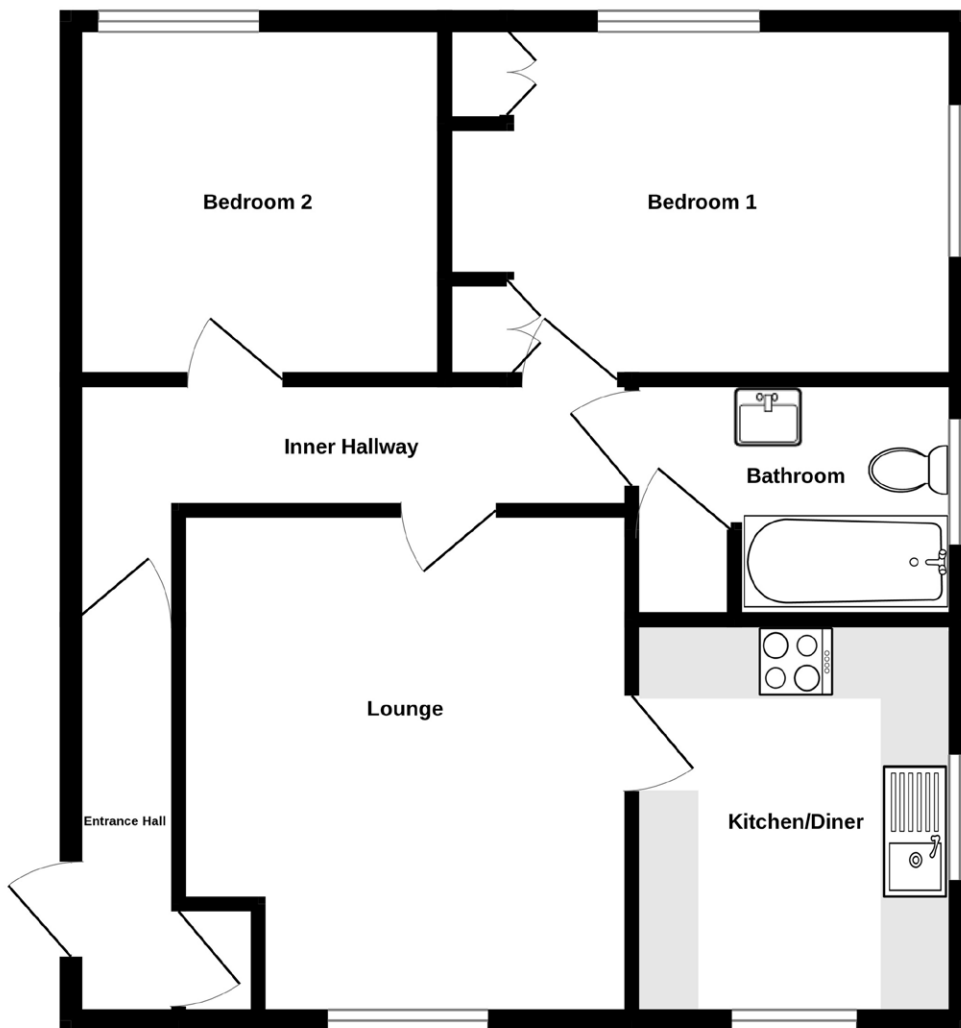






Floorplan

FIRST FLOOR
612 sq.ft. (56.9 sq.m.) approx.



Entrance Hall

10'9 x 2'9 (3.3m x 0.8m)

Inner Hall

15'1 x 3'5 (4.6m x 1m)

Lounge

13'5 x 11'11 (4.1m x 3.6m)

Kitchen/diner

10'5 x 8'7 (3.2m x 2.6m)

APPLIANCES

- Zanussi integrated fridge freezer
- Zanussi integrated dishwasher
- Hotpoint washing machine
- Oven
- Overhead extractor fan

Bedroom 1

13'6 x 9'2 (4.1m x 2.8m)

Bedroom 2

9'10 x 9'4 (3m x 2.8m)

Bathroom

8'7 x 6'4 (2.6m x 1.9m)

EXTERIOR

There is parking for one car with additional visitor spaces and communal gardens which are mainly lawned with a seating area to one corner.

Price to include: Fitted carpets, curtains, light fittings and appliances as listed.

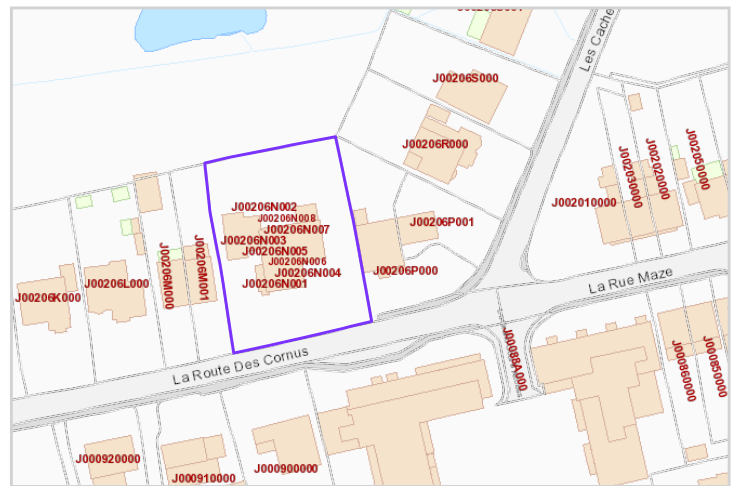
Service Charge: £50 p/m (does not include buildings insurance which is paid for separately)

Services: Mains electricity, water and drainage, gas central heating, uPVC double glazing.

Perry's ref: 30 B1

what3words: hounding.exhausts.spellers

TRP: 83



Mapping / Aerial Photography Copyright © States of Guernsey 2026

CONTACT OUR LOCAL MARKET TEAM



Matt



Ben



Liz



Courtney



Hannah