



Benarty

10, Tree Tops Clos, Les Hubits, St Martin, GY4 6LU

£570,000

LOCAL MARKET

SOLE AGENT

Tucked away in the tranquil lanes of St Martin's, this smart semi detached bungalow would be ideal for small families, those looking to downsize or seeking single-level living.

The accommodation features two well proportioned bedrooms, the main bedroom benefitting from an en-suite, plus a family bathroom. The heart of the home is a bright and airy flowing kitchen, lounge/diner and sun room.

Externally, the property benefits from parking and an enclosed lawned garden.

School catchment: St Martin's Primary School / Les Beaucamps High School

Key facts



- Semi detached bungalow
- Quiet clos in lanes of St Martin's
- 2 bedrooms, 2 bath/shower rooms
- Flowing kitchen living space
- Parking for 2-3 vehicles
- Pleasant enclosed garden

t 01481 236039
e enq@cooperbrouard.com
w cooperbrouard.com



 **cooper
brouard**

GUERNSEY'S ESTATE AGENT





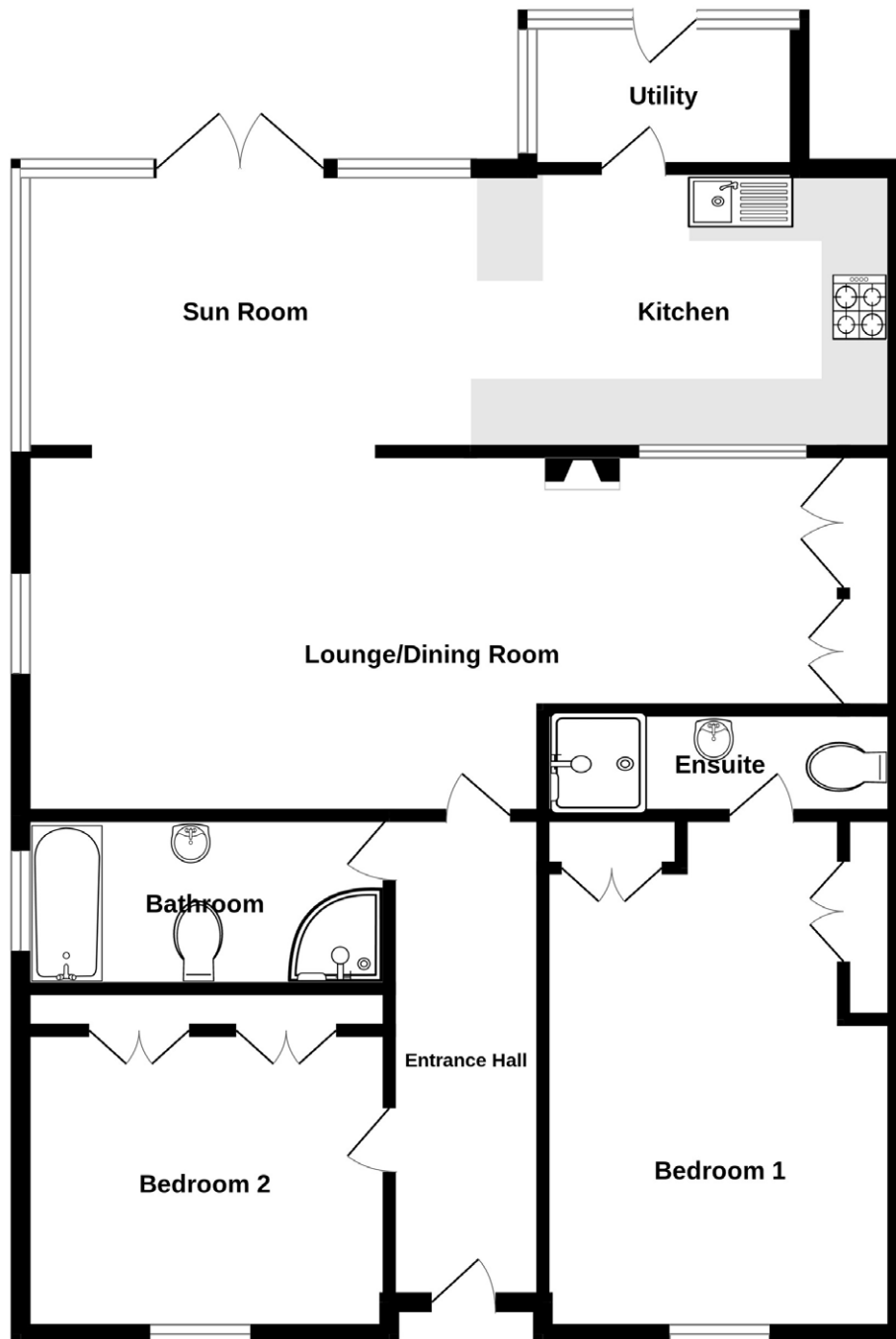






Floorplan

GROUND FLOOR



Entrance hall

Lounge/dining room

24'6 x 10'8 narrowing to 7'8 (7.5m x 3.3m, 2.4m)

Sun room/kitchen

21'3 x 8'5 (6.5m x 2.6m)

APPLIANCES

- Neff Double oven
- Neff Induction hob with extractor
- Neff Integrated microwave
- Neff Integrated fridge and integrated freezer
- Bosch slimline dishwasher

Utility/porch

8'2 x 4'5 (2.5m x 1.4m)

APPLIANCES

- Hotpoint washer/dryer.

Bedroom 1

15'6 x 10'6 (4.7m x 3.2m)

En suite shower room

8'9 x 3' (2.7m x 0.9m)

Bedroom 2

10'10 x 9' + wardrobes (3.3m x 2.7m)

Bathroom

11' x 5'6' (3.4m x 1.7m)

EXTERIOR

The property is approached off the clos road over a paved private drive providing parking for one car, a further parking space is allocated in the visitor parking area. A path leads through to the enclosed lawned garden and onto the front door. To the rear is a south facing enclosed patio.

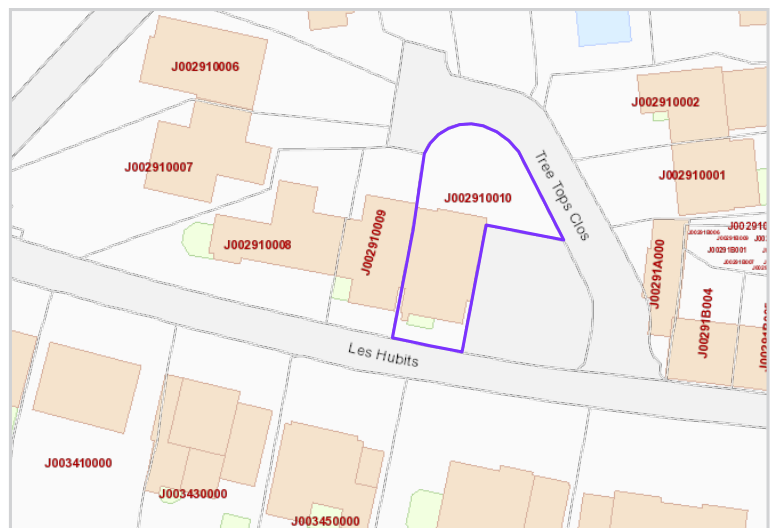
Price to include: Fitted carpets, curtains, light fittings and appliances as listed.

Services: Mains water and electricity, electric underfloor heating and uPVC double glazing.

Perry's ref: 25 E4

what3words: crystal.cave.exemplifies

TRP: 114



Mapping / Aerial Photography Copyright © States of Guernsey 2026

CONTACT OUR LOCAL MARKET TEAM



Matt



Ben



Liz



Courtney



Hannah