



Mountfield Court

First Floor Apartment

£430,000

LOCAL MARKET

SOLE AGENT

Amherst, St. Peter Port, GY1 2DN

This first-floor two-bedroom apartment with parking, garage and garden is conveniently situated on the outskirts of St Peter Port, opposite Beau Sejour and close to local amenities.

With two bedrooms, light lounge/diner with distant views, kitchen, WC, en-suite and sunroom this unique property is ready for a new owner to add their stamp making it an ideal first time buy or investment.

School catchment: Amherst Primary / Les Varendes High

Key facts



- Conveniently situated on the outskirts of St Peter Port
- First floor 2-bedroom apartment
- Bright and airy lounge diner with wonderful views
- Garage, allocated parking and private garden
- Sunroom/utility area on the ground floor

t 01481 236039
e enq@cooperbrouard.com
w cooperbrouard.com



 **cooper**
brouard

GUERNSEY'S ESTATE AGENT



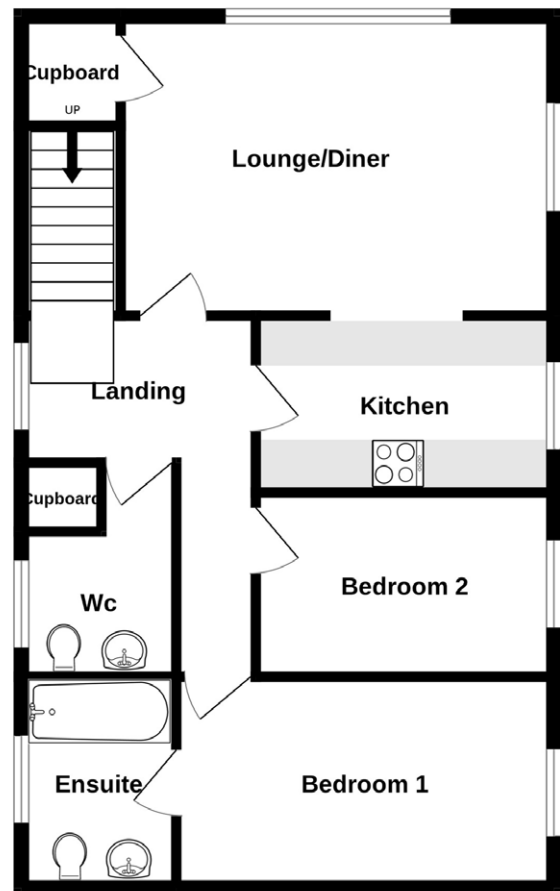
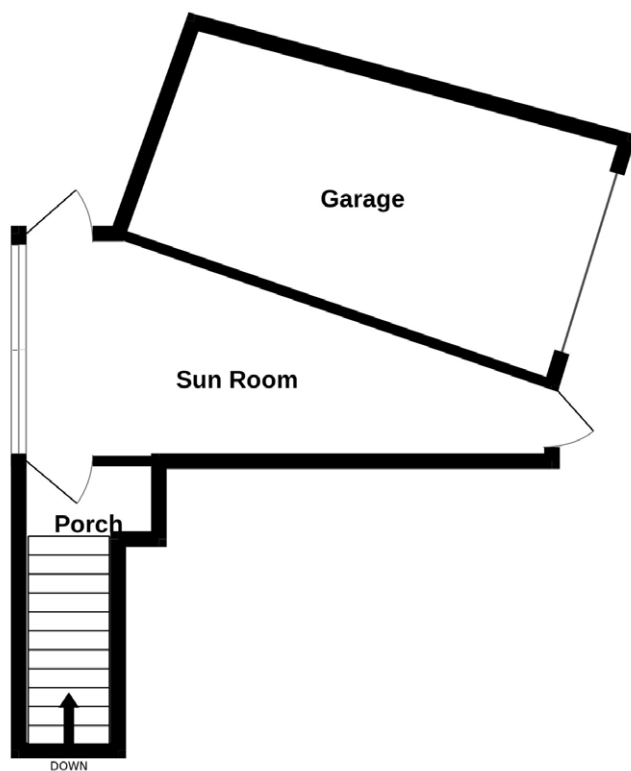








Floorplan



GROUND FLOOR

Garage

Sunroom

21'4 x 9'1 (6.50m x 2.77m)

FIRST FLOOR

Landing

8'5 x 4'2 (2.57m x 1.27m)

Lounge/Diner

16'8 x 12'0 (5.08m x 3.66m)

Kitchen

11'2 x 5'4 (3.40m x 1.63m)

APPLIANCES

- Hotpoint Oven
- Hob & Extractor Fan
- Hotpoint Fridge/Freezer
- Hotpoint Washing Machine
- Hotpoint Dryer

Bedroom 1

14'3 x 8'8 (4.34m x 2.64m)

Ensuite

7'7 x 5'4 (2.31m x 1.63m)

Bedroom 2

11'3 x 6'0 (3.43m x 1.83m)

WC

5'5 x 4'9 (1.65m x 1.45m)

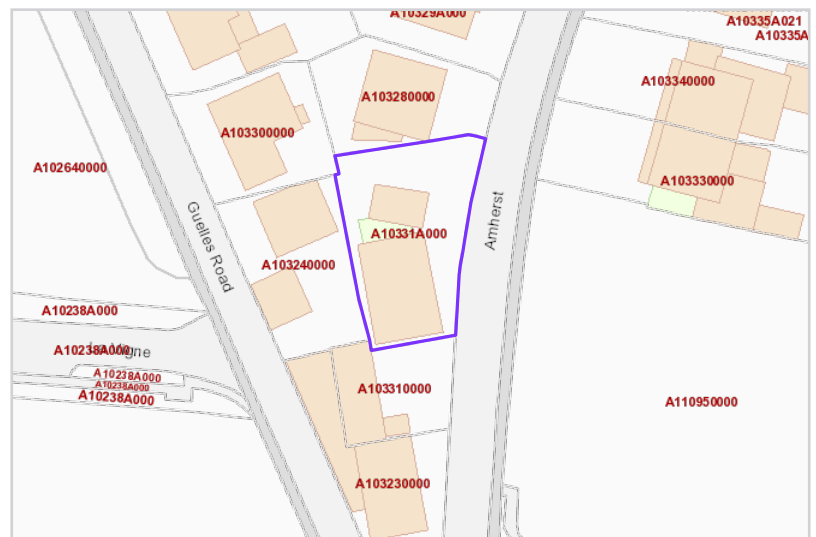
Price to include: Fitted carpets, curtains, light fittings and appliances as listed.

Services: Mains electricity and water, Mains drainage, Gas central heating, uPVC double glazing.

Perry's ref: 3G2

what3words: pats.bobbing.longish

TRP: 202



Mapping / Aerial Photography Copyright © States of Guernsey 2026

CONTACT OUR LOCAL MARKET TEAM



Matt



Ben



Liz



Courtney



Hannah