



Harbour Mews

South Quay, St Sampson, GY2 4QH

£1,200,000

OPEN MARKET

JOINT AGENT

A prominently positioned mixed use property located close to the heart of St Sampson's "Bridge" retail and commercial centre offering an appealing combination of ground floor retail unit and Open Market first floor apartment.

Overlooking the harbour/marina, there is excellent on street public parking and parking for two vehicles behind double gates.

Key facts



- Ground floor retail premises
- First floor Open Market apartment
- Prominent seafront location St Sampsons
- Excellent on street public parking options
- Parking for two vehicles in tandem

t 01481 236039
e enq@cooperbrouard.com
w cooperbrouard.com

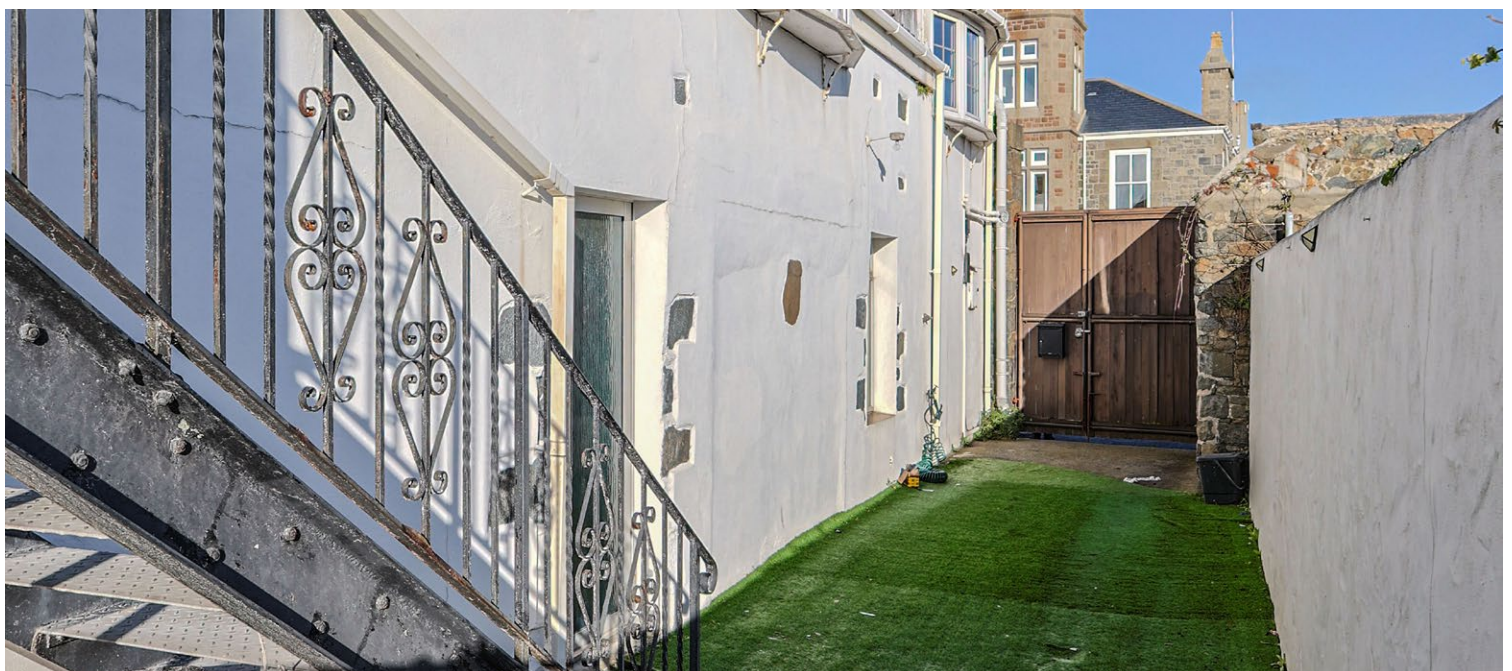


**cooper
brouard**
GUERNSEY'S ESTATE AGENT





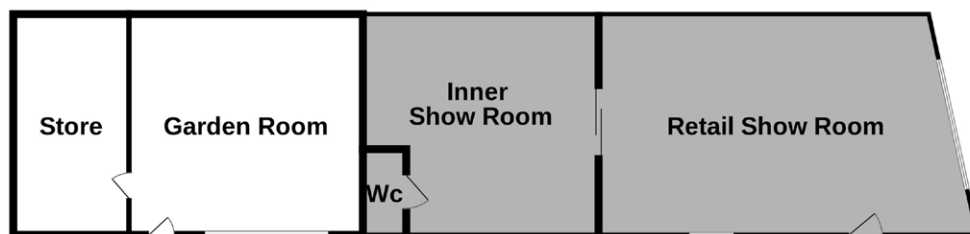




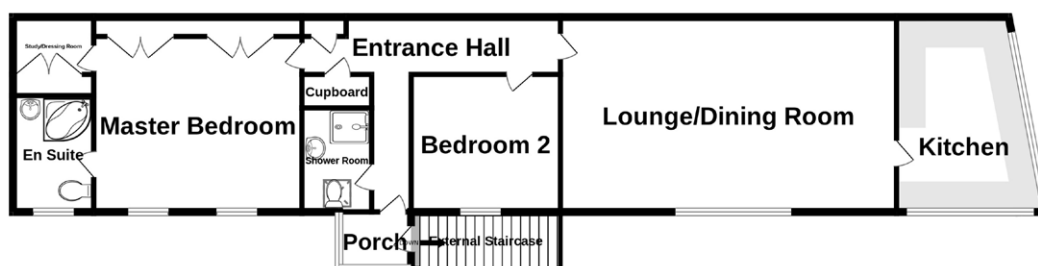


Floorplan

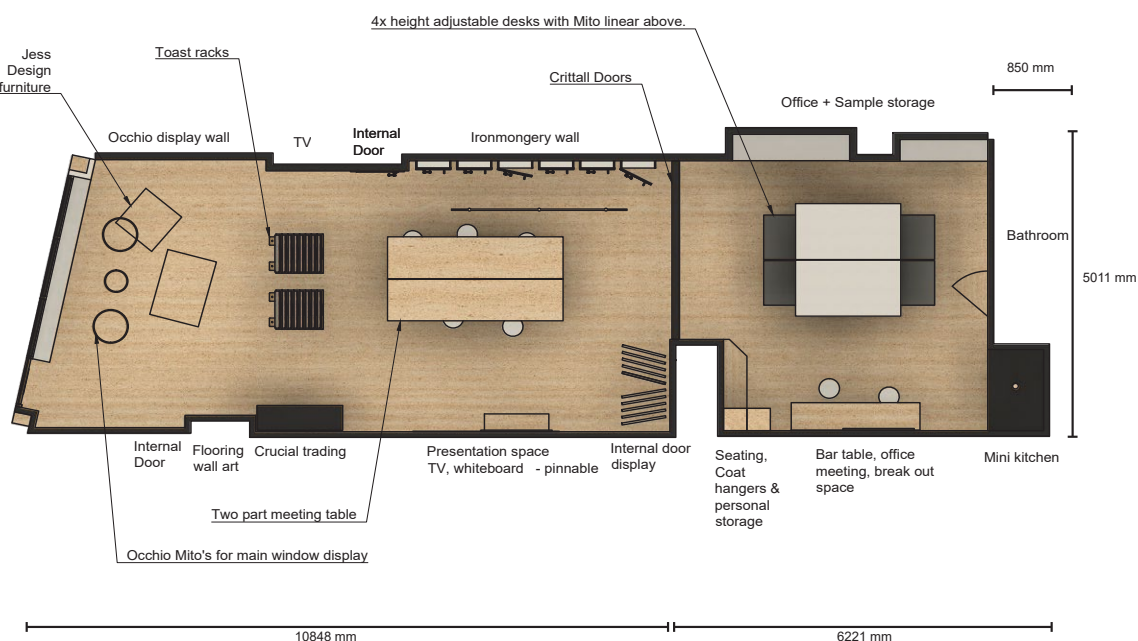
GROUND FLOOR



1ST FLOOR



Bonsai Harbour Design Studio



GROUND FLOOR

Retail Unit

452 ft² (42 m²)

Retail unit with roadside display window and pedestrian access. Currently split into display area to front and inner office with mini kitchen and toilet facilities.

Currently let at £17,077.56 per annum.

To the rear of the retail unit, recently used by the apartment but giving potential for the retail unit to expand into are:

Garden room

17'8 x 16'8 (5.4m x 5m)

Store room

16'8 x 8' (5m x 2.4m)

FIRST FLOOR

Open Market Apartment

1,103 ft² (102.46 m²)

External steps to landing and enclosed lobby

Hallway

21'6 max x 4'4 max (6.5m x 1.3m)

Shower room

9'2 x 4'8 (2.8m x 1.4m)

Bedroom 1

15'6 x 14'6 (4.7m x 4.5m)

Dressing room

8'2 x 6'10 (2.5m x 2.1m)

En-suite bathroom

8'7 x 8' (2.7m x 2.4m)

Bedroom 2

11'4 x 11'3 (3.5m x 3.4m)

Lounge/diner

25'5 x 15'11 (7.7m x 4.8m)

Kitchen/breakfast room

18'3 x 9'7 (5.6m x 3m)

APPLIANCES

- Format cooker with double oven
- 4 ring hob and extractor
- Bosch fridge
- Zanussi dishwasher

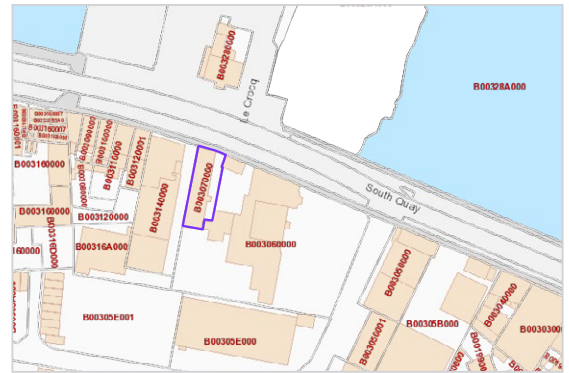
Price to include: Fitted carpets, curtains, light fittings and appliances as listed.

Services: Mains electricity and water, mains drainage, oil fired central heating.

Perry's ref: 11 F3

what3words: swung.prickly.messing

TRP: 244



Mapping / Aerial Photography Copyright © States of Guernsey 2025

CONTACT OUR OPEN MARKET TEAM



Matt



Ross



Ben



Liz



Courtney



La Grande Rue,
St Martin's,
Guernsey GY4 6RR

t 01481 236039
e enq@cooperbrouard.com
w cooperbrouard.com

