



6, Reine Des Pres

£380,000

Newtown Road, Alderney GY9 3XN

OPEN MARKET

SOLE AGENT

Stunning 3-Bedroom Beach House with Panoramic Sea Views

Nestled within a private estate in a highly sought-after location, this beautiful 3-bedroom beach house offers breathtaking views across Braye Bay and the harbour.

The ground floor comprises a double bedroom, a smaller single bedroom, a superbly refurbished bathroom, a utility room with a washing machine and tumble dryer, and an additional versatile room with its own separate entrance, ideal as a home office or guest accommodation.

On the second floor, the master bedroom benefits from a modern shower en-suite. Just six steps up leads to a bright and spacious lounge featuring a striking granite fireplace, a fully fitted kitchen, and a conservatory/dining area that opens onto a balcony, perfectly positioned to enjoy the stunning sea views.

Key facts



- Stunning 3-bedroom beach house with panoramic views over Braye Bay and the harbour.
- Double and single bedrooms, bathroom, versatile room with separate entrance on the ground floor.
- Master bedroom with en-suite, lounge, kitchen, conservatory, and balcony on the second floor.
- Front and rear gardens, rear terraced for outdoor entertaining.
- The property benefits from a garage at the end of the block, directly opposite the front garden, along with additional communal parking.

t 01481 236039
e enq@cooperbrouard.com
w cooperbrouard.com



**cooper
brouard**
GUERNSEY'S ESTATE AGENT



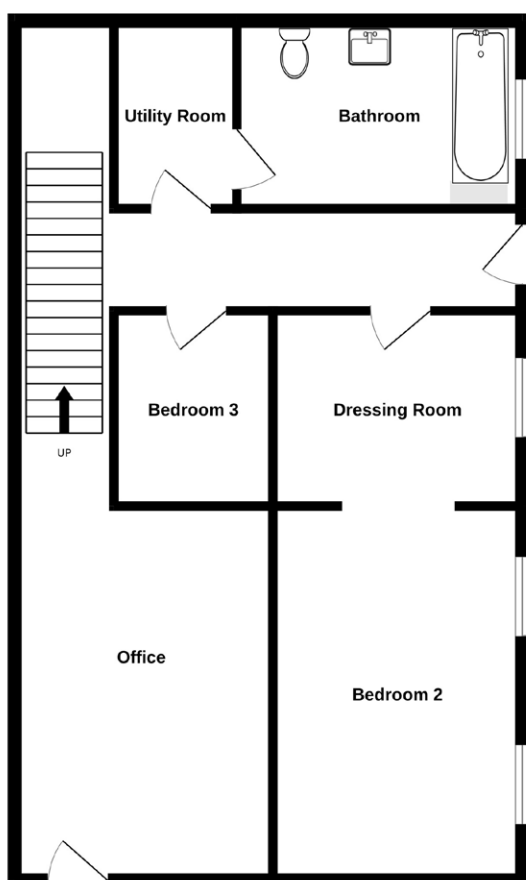




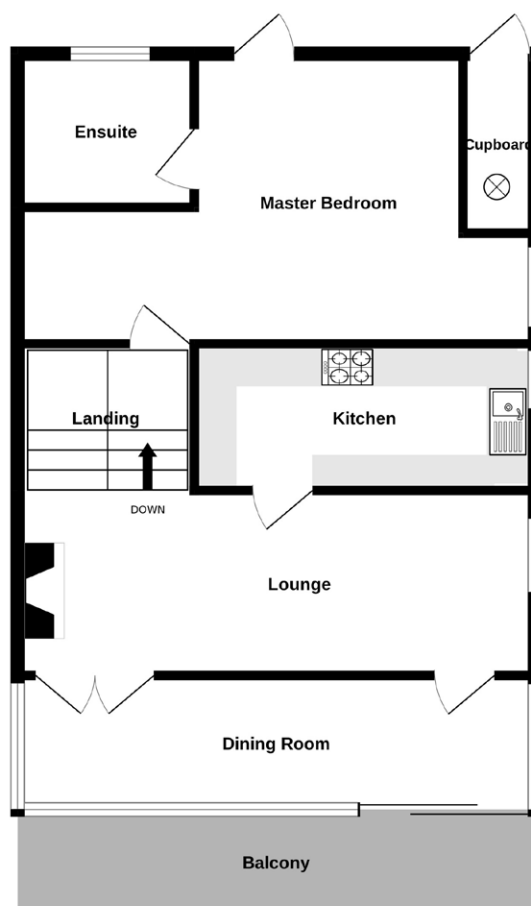


Floorplan

GROUND FLOOR
755 sq.ft. (70.2 sq.m.) approx.



1ST FLOOR
670 sq.ft. (62.2 sq.m.) approx.



TOTAL FLOOR AREA: 1425 sq.ft. (132.4 sq.m.) approx.
Made with Metropix ©2025