



La Turquie

Grande Rue, Vale GY3 5ED

£895,000

LOCAL MARKET

JOINT AGENT

A traditional farmhouse set in a convenient and popular location close to Bordeaux Harbour.

This listed, semi-detached home offers excellent space for a growing family with three reception rooms, kitchen, 5 bedrooms, the principal bedroom with ensuite dressing room and bathroom, a family bathroom, excellent storage areas, workshop and double garage. Externally the property enjoys a large and private lawned garden along with ample parking. Situated close to coastal walks at Bordeaux and Beaucette this substantial home is worthy of closer inspection.

School catchment: Vale Primary and St Sampson's High

Key facts



- Substantial Heritage listed farmhouse
- Excellent living accommodation and 5 bedrooms
- Large enclosed lawned garden
- Double garage and ample parking
- Close to coastal walks at Bordeaux & Beaucette

t 01481 236039
e enq@cooperbrouard.com
w cooperbrouard.com



**cooper
brouard**
GUERNSEY'S ESTATE AGENT

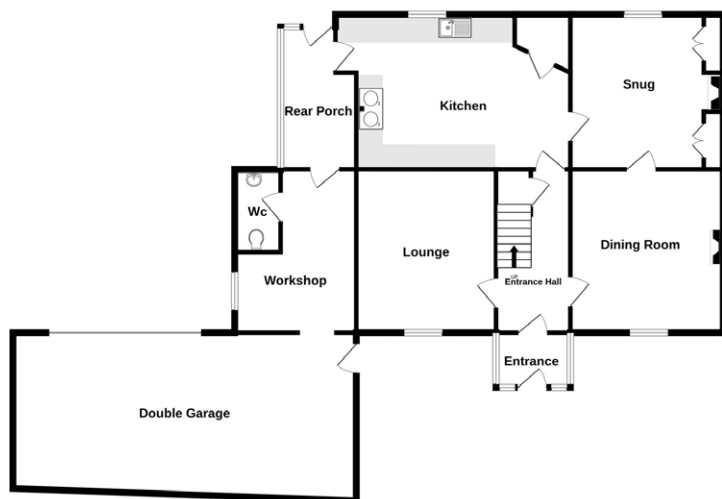




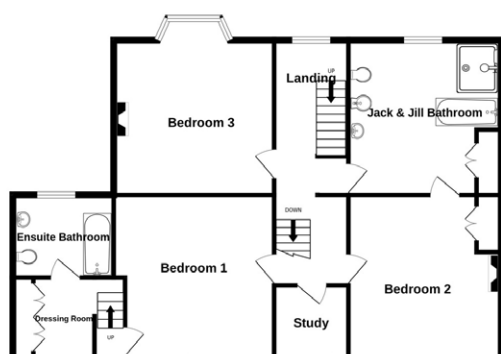


Floorplan

GROUND FLOOR



1ST FLOOR



2ND FLOOR



Made with Metropix ©2023



Mapping / Aerial Photography Copyright (C) States of Guernsey 2023

Entrance porch

6' x 4'9 (1.8m x 1.5m)

Entrance hall

14' x 6'4 (4.27m x 1.93m)

Lounge

14' x 12' (4.3m x 3.7m)

Dining room

13'10 x 13'2 (4.2m x 4m)

Snug

10'6 x 10'5 (3.2m x 3.2m)

Kitchen

19' x 13'5 (5.8m x 4.1m)

APPLIANCES

- Oil fired Aga
- Hotpoint dishwasher
- Hotpoint washing machine
- Miele freezer
- Hotpoint Ice Diamond fridge

Rear porch

12'3 x 6'5 (3.7m x 2m)

Workshop

14'6 x 10' (4.4m x 3.1m)

Gardener's WC

7' x 3'6 (2.1m x 1.1m)

Double garage

29'8 x 14'7 (9m x 4.5m)

FIRST FLOOR

Half landing

4' x 2'7 (1.2m x 0.8m)

Main landing

6'4 x 3'4 (1.9m x 1m)

Study

6'5 x 6'5 (2m x 2m)

Bedroom 2

14' x 13'4 (4.3m x 4.1m)

Ensuite bathroom

11'7 x 11'2 (3.5m x 3.4m)

Bedroom 1

13'7 x 13' (4.1m x 4m)

Dressing area

8' x 7'6 (2.4m x 2.3m)

Ensuite bathroom

10'4 x 6' (3.2m x 1.8m)

Rear landing

13'2 x 5'4 (4m x 1.6m)

Bedroom 3

18'8 x 14' (5.7m x 4.3)

SECOND FLOOR

Landing

11'10 x 4' (3.6m x 1.2m)

Bedroom 4

15'5 x 14' (4.7m x 4.3m)

Bedroom 5

15'5 x 12'9 (4.7m x 3.9m)

Attic room

13'3 x 9'5 (4m x 2.9m)

EXTERIOR

The property is approached through a pedestrian gate over a gravel foregarden with a path to the front door. To the side the gravel drive provides ample parking and access to the double garage.

The lawned garden is well established and houses a large timber built shed.

Price to include: Fitted carpets, curtains, light fittings and appliances as listed.

Services: Mains electricity, water and drainage, oil fired heating, timber single glazing.

Finding the property: From Bordeaux Harbour continue north along Rue du Bordeaux and into Grande Rue, La Turquie is on the right opposite Le Petit Marais (the first lane on the left).

Perry's ref: 7 H4

what3words: cuter.angle.daisy

TRP: 386

CONTACT OUR LOCAL MARKET TEAM



Matt



Ben



Liz



Courtney