



# Agricultural land

Le Planel Torteval

## £72,000

LOCAL MARKET

Level, well drained land enclosed by earth banks.  
Good roadside vehicular access from Rue du Planel.

### Key facts

- Measuring 3 vergee 30.98 perch
- Good quality field
- Vehicular access and well drained
- Enclosed by earth banks
- Tenanted until December 2022

t 01481 236039  
e [enq@cooperbrouard.com](mailto:enq@cooperbrouard.com)  
w [cooperbrouard.com](http://cooperbrouard.com)



 **cooper  
brouard**  
GUERNSEY'S ESTATE AGENT

**Agricultural land** | £72,000

LOCAL MARKET

Cadastre G02340000

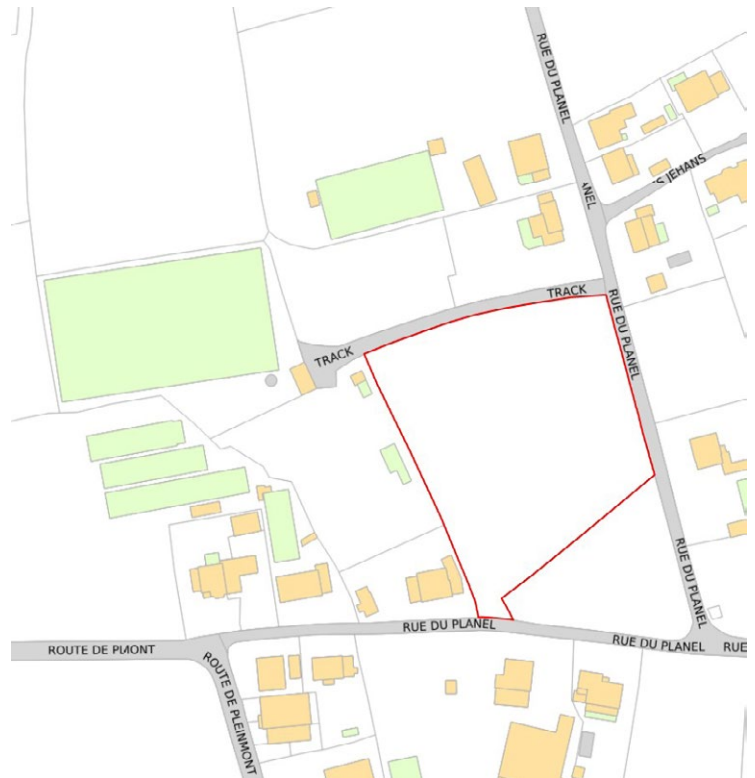
**Size:** 3V 30.98P, 6186m<sup>2</sup>

**Finding the field:** travelling past Torteval Engineering on your right, take the next right into Rue du Planel and then the first left and the field is the second on the left.

**Perry's ref:** 27 E3

**what3words:** featuring.muffles.cherry

**TRP:** 124



Mapping / Aerial Photography Copyright (C) States of Guernsey 2022

## CONTACT OUR LOCAL MARKET TEAM



**Matt**



**Cathy**



**Ben**



**Liz**



**Lucie**



**Harry**



**Charlie**



**Emma**



La Grande Rue,  
St Martin's,  
Guernsey GY4 6RR

**t** 01481 236039  
**e** [enq@cooperbrouard.com](mailto:enq@cooperbrouard.com)  
**w** [cooperbrouard.com](http://cooperbrouard.com)



These particulars are supplied on the understanding all negotiations are conducted through this office. We understand these particulars to be correct but we do not guarantee their accuracy nor do they form part of any contract.