



# Agricultural land

Rue Carey, St Pierre du Bois

£75,000

LOCAL MARKET

A fine 'ploughman's' field with level, well drained land measuring virtually 2 verges enclosed by earthbanks and with good roadside access.

## Key facts

- Measuring 1 vergee 39 perch
- Level yet well drained
- Enclosed by earth banks
- Vehicular access
- Situated in quiet rural lanes

t 01481 236039  
e [enq@cooperbrouard.com](mailto:enq@cooperbrouard.com)  
w [cooperbrouard.com](http://cooperbrouard.com)



 **cooper  
brouard**

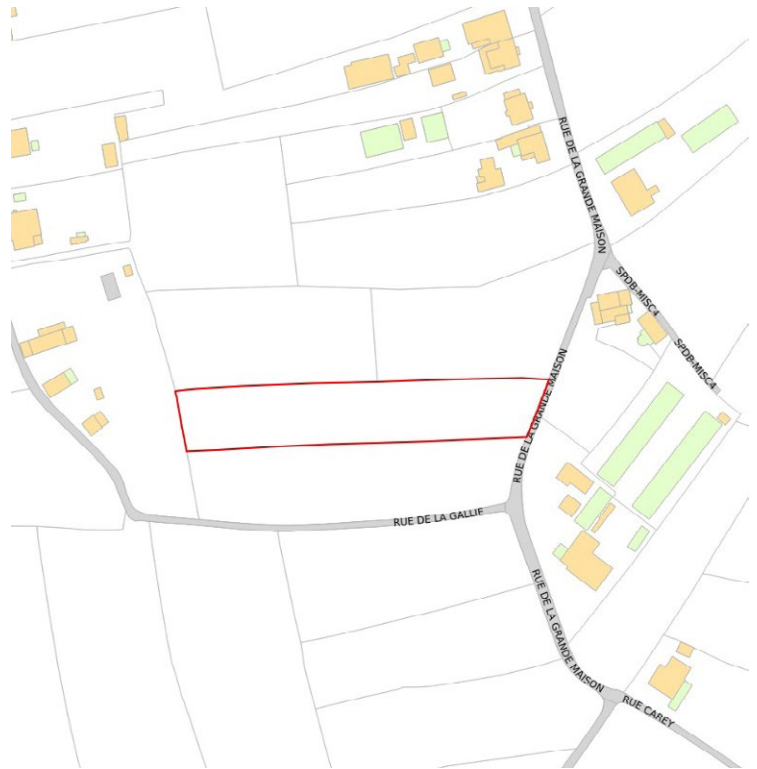
GUERNSEY'S ESTATE AGENT

## LOCAL MARKET

**Size:** 1V 39P, 3237m<sup>2</sup>

**Perry's ref:** 27 F3

TRP: 65



Mapping / Aerial Photography Copyright (C) States of Guernsey 2022

CONTACT OUR LOCAL MARKET TEAM



**Matt**



**Cathy**



**Ben**



**Liz**



Lucie



Harry



**Charlie**



Emma



**t** 01481 236039  
**e** enq@cooperbrouard.com  
**w** cooperbrouard.com



These particulars are supplied on the understanding all negotiations are conducted through this office. We understand these particulars to be correct but we do not guarantee their accuracy nor do they form part of any contract.